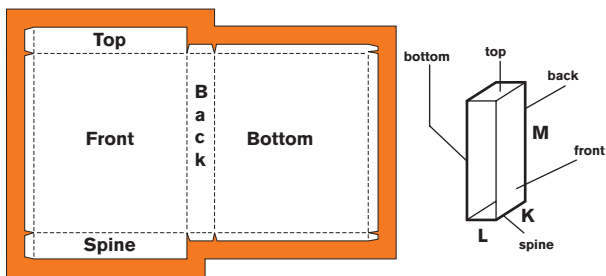
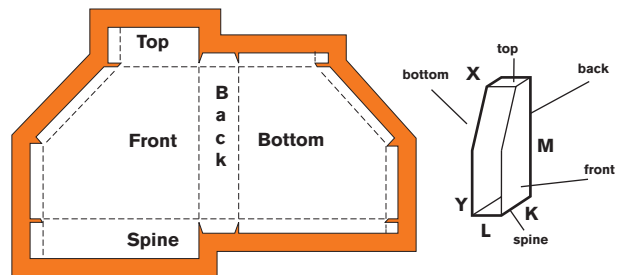


- We produce your Slip Case in top quality. In order to complete your order, we need your design draft as printable PDF/X-1a:2001 or as a completed printed sheet. Please comply with the following instructions in the interests of an optimum production flow. **Please forward these instructions to your graphic/layout service provider!**
- Please provide a written purchase order and an imposition sheet that shows our work. Please also inform us about the individual processing steps so that we can use the right materials. It is also important for us to know the required delivery address, if this is not the same as the purchaser. Coordinating all production processes and materials guarantees optimum production results. Make the maximum use of our experience, know-how and possibilities! **Ask and inform us in plenty of time, we will be glad to be of any help.**
- When placing an order, please ask for your individual 1:1 imposition sheet or use our imposition sheet archives for standard solutions: this is available on the internet at www.layoutvorlagen.com. Use this to build up your data (please retain the settings for the spot colour of the punch and the overprinting settings), this saves draft time and automatically takes account of all technical requirements for subsequent production. **Detailed information on the quality of the data can be found on our checklist for data delivery.**

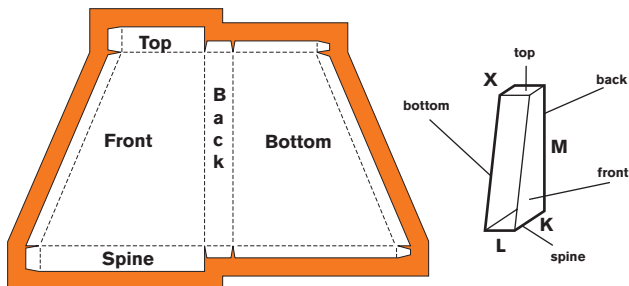
PRINTING SHEET SLIP CASE TYPE "A"



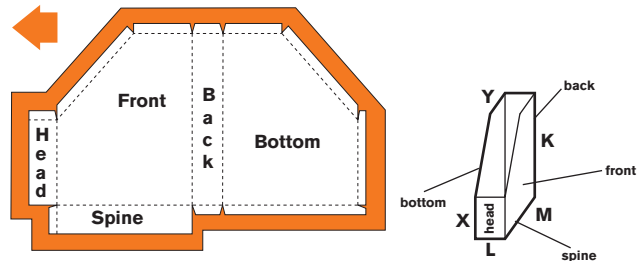
PRINTING SHEET SLIP CASE TYPE "B"



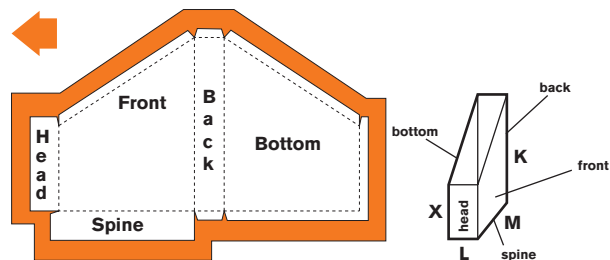
PRINTING SHEET SLIP CASE TYPE "C"



PRINTING SHEET SLIP CASE TYPE "D"



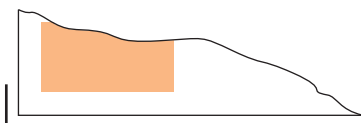
PRINTING SHEET SLIP CASE TYPE "E"



Slip case type "D" and "E": to position your logo in the middle of the head, it must be moved to the outside by the cardboard thickness of your slip case (direction of arrow)!

All slip cases: Please allow for a dimension/production tolerance of + 2.0 mm. Peripheral design elements over the cut edges cannot be adhered with a precise fit. Set position markers that are also printed at least 1.5 cm outside the finished format, tone area approx. 2.0 cm larger than the outline!

Please use the indicated printing sheet form. **For deviations in the printing sheet format, please position the printing picture to the enclosure.** to reduce punch tolerances, we only cut along two edges: this preserves the enclosure.



Printing sheet format: minimum size 3.0 cm larger than the punch form all round, paper direction: narrow sheet in one-off production.

The paper fibres run parallel to the wide side of the printing sheet.

Please refer to your offer and the digital layout documents for the exact position.

Edge flap/tone area overlap: please allow for 2.0 cm in the layout, edge flap is visible on the inside of the slip case. Plus 1 cm processing edge, please leave printfree.

Cut angle: please place the cut angles at spacing of 2.0 cm on the spreading.

Position mark: Please mark the middle of the slip case and use markers for the height on the left and right.

Placement: 0.5 cm outside the spreading. Line length: 3 mm, line thickness: 0.2 mm.

On request we can also produce a proof from your data and make up a sample according to your specifications.

Achilles Präsentationsprodukte GmbH
Bruchkampweg 40, 29227 Celle
Postfach 3101, 29231 Celle
Germany

Phone: +49(0)5141-753-206
Fax: +49(0)5141-753-227
E-Mail: ajs@achilles.de
Internet: www.achilles-app.de